

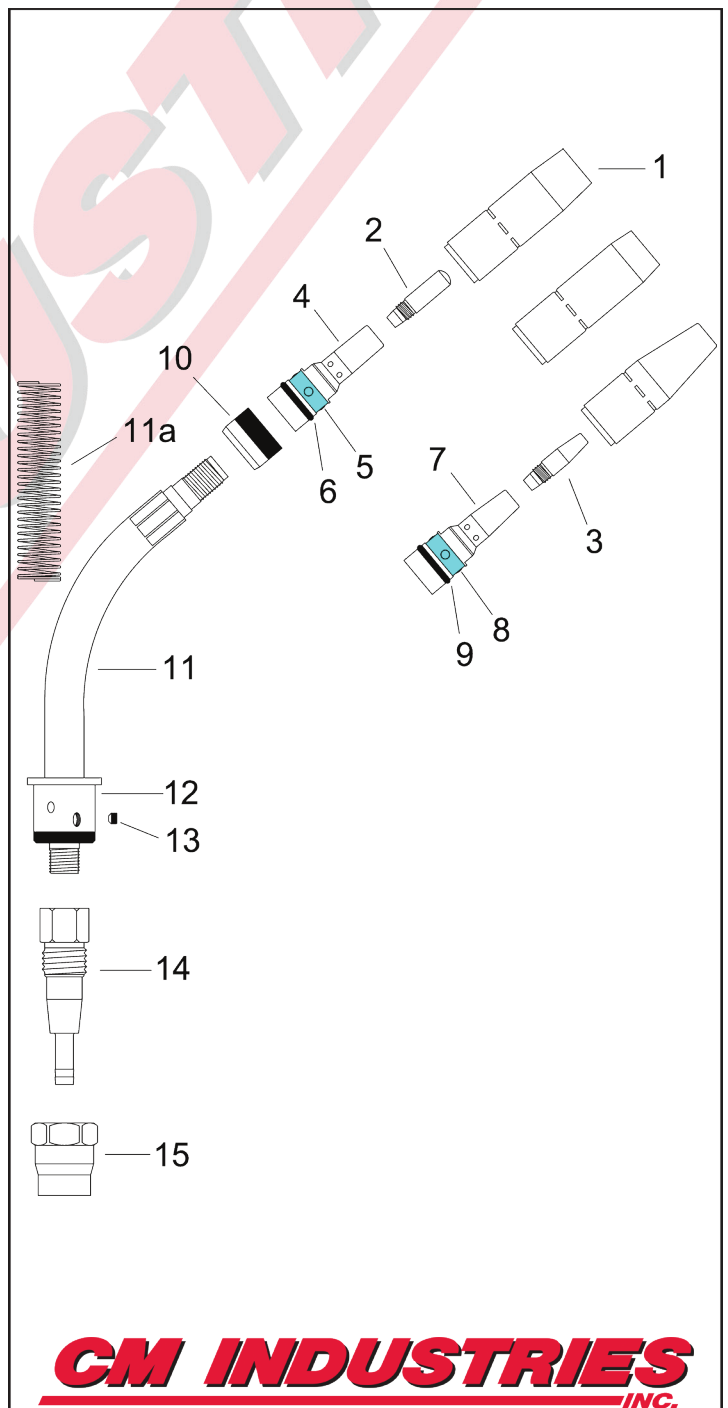
TRG 600

AIR-COOLED MIG GUN

Replacement Suitable for Tregaskiss®

RATING	GUN ORDERING PART NUMBER	POWER PIN Direct Connect
600 Amp CO2 @ 80% Duty Cycle 450 Amp Mixed Gas @ 80% Duty Cycle Wire Capacity: 0.035" (0.9mm) - 3/32" (2.4mm)	R60xx-332 RB60xx-332 RE60xx-332 RLN60xx-332 RLF60xx-332 RM60xx-332 RPA60xx-332 RTW60xx-332 <small>xx = Standard lengths of 10, 12, 15, 20, and 25 ft. Custom lengths also available.</small>	Tweco® #4 Bernard® Euro Lincoln® "LN" Lincoln® "LF"/Powerfeed 10 Miller® Panasonic® Tweco® #5

#	Part Number	Description
1.	R401-5-50 R401-5-62 R401-5-75	Nozzle, H.D., 1/2", 1/4" Tip Recess Nozzle, H.D., 5/8", 1/4" Tip Recess Nozzle, H.D., 3/4", 1/4" Tip Recess
	R401-6-50 R401-6-62 R401-6-75	Nozzle, H.D., 1/2", 1/8" Tip Recess Nozzle, H.D., 5/8", 1/8" Tip Recess Nozzle, H.D., 3/4", 1/8" Tip Recess
	R401-7-62 R401-7-75 R401-7-87	Nozzle, H.D., 5/8", 1/4" Tip Recess, Brass Nozzle, H.D., 3/4", 1/4" Tip Recess, Brass Nozzle, H.D., 7/8", 1/4" Tip Recess, Brass
2.	CM "Taper-LOCK" Contact Tips 155-1-035 155-1-040 155-1-045 155-1-364 155-1-052 155-1-062 155-1-564 155-1-332	H.D. Contact Tip, .035" (0.9mm) H.D. Contact Tip, .040" (1.0mm) H.D. Contact Tip, .045" (1.2mm) H.D. Contact Tip, 3/64" (1.2mm) H.D. Contact Tip, .052" (1.4mm) H.D. Contact Tip, .062" (1.6mm) H.D. Contact Tip, 5/64" (2.0mm) H.D. Contact Tip, 3/32" (2.4mm)
3.	155-2-035 155-2-040 155-2-045 155-2-364 155-2-052 155-2-062	H.D. Tapered Contact Tip, .035" (0.9mm) H.D. Tapered Contact Tip, .040" (1.0mm) H.D. Tapered Contact Tip, .045" (1.2mm) H.D. Tapered Contact Tip, 3/64" (1.2mm) H.D. Tapered Contact Tip, .052" (1.4mm) H.D. Tapered Contact Tip, .062" (1.6mm)
4.	154-R505	Diffuser H.D., for CM Taper-LOCK Tip
5.	154-1	Replacement Retaining Ring
6.	154-2	Replacement O-Ring
7.	154-R506	Diffuser, for CM Taper-LOCK Tip
8.	154-1	Replacement Retaining Ring
9.	154-2	Replacement O-Ring
10.	R402-11	Neck Insulator
11.	R505-45 R505-60 R505-180	Neck w/ Body, 45° Neck w/ Body, 60° Neck w/ Body, 180°
11a.	R506-1	Neck Spring Guard (optional)
12.	R407	Replacement Body
13.	R407-2	Body Screw



CM INDUSTRIES
INC.

#	Part Number	Description
14.	R608	Connector Cone
15.	R609	Cone Nut
16.	R413-5	Inner Tube Clamp
17.	R412-1	Switch Lead Connector
18.	R413-1	Outer Jacket Clamp
19.	R411-3	Mounting Screw
20.	R411-2	Switch Housing
21.	R411-1	Switch
22.	R410	Handle, Front
23.	R613-2	Spring Guard, Front
24.	R613-10	Unicable Assembly, 10'
	R613-12	Unicable Assembly, 12'
	R613-15	Unicable Assembly, 15'
	R613-20	Unicable Assembly, 20'
	R613-25	Unicable Assembly, 25'
25.	B2520041-S	Strain Relief Spring
26.	B2520066	Strain Relief Kit
27.	R414-400CM	Power Pin Block
28.	R214	Power Pin, Tweco
29.	R414-1	O-Ring
30.	C44C	Liner Set Screw
31.	R214-1	Power Pin, Miller
32.	R414-11-2	O-Ring, Miller
33.	R214-116	Guide Cap, Miller .035"-1/16" Wire
34.	R214-2	Power Pin, Lincoln "LN"
35.	401-00-001	Adaptor Nut
36.	285-03-002	Male Pin w/ Lead
37.	R425-10CM	Power Pin, Euro
38.	285-00-002	O-Ring, Euro
39.	300-05-001	Electrical Plug, Miller
40.	300-05-002	Electrical Plug, Lincoln
41.	R415-30-15	Liner Assembly, .030", 15'
	R415-35-15	Liner Assembly .035"-.045", 15'
	R415-116-15	Liner Assembly .045"-1/16", 15'
	R415-564-15	Liner Assembly, 1/16-5/64", 15'
	R415-332-15	Liner Assembly, 5/64-3/32", 15'
	R415-35-2	Liner Assembly .035"-3/64", 15' Aluminum
	R415-116-2	Liner Assembly 3/64"-1/16", 15' Aluminum
	R415-35-0	Teflon Liner Assy., .035"-3/64", 15' Aluminum
	R415-116-0	Teflon Liner Assy., 3/64"-1/16", 15' Aluminum
	R415-35-25	Liner Assembly .035"-.045", 25'
	R415-116-25	Liner Assembly .045"-1/16", 25'
	R415-564-25	Liner Assembly, 1/16-5/64", 25'
	R415-332-25	Liner Assembly, 5/64-3/32", 25'

