

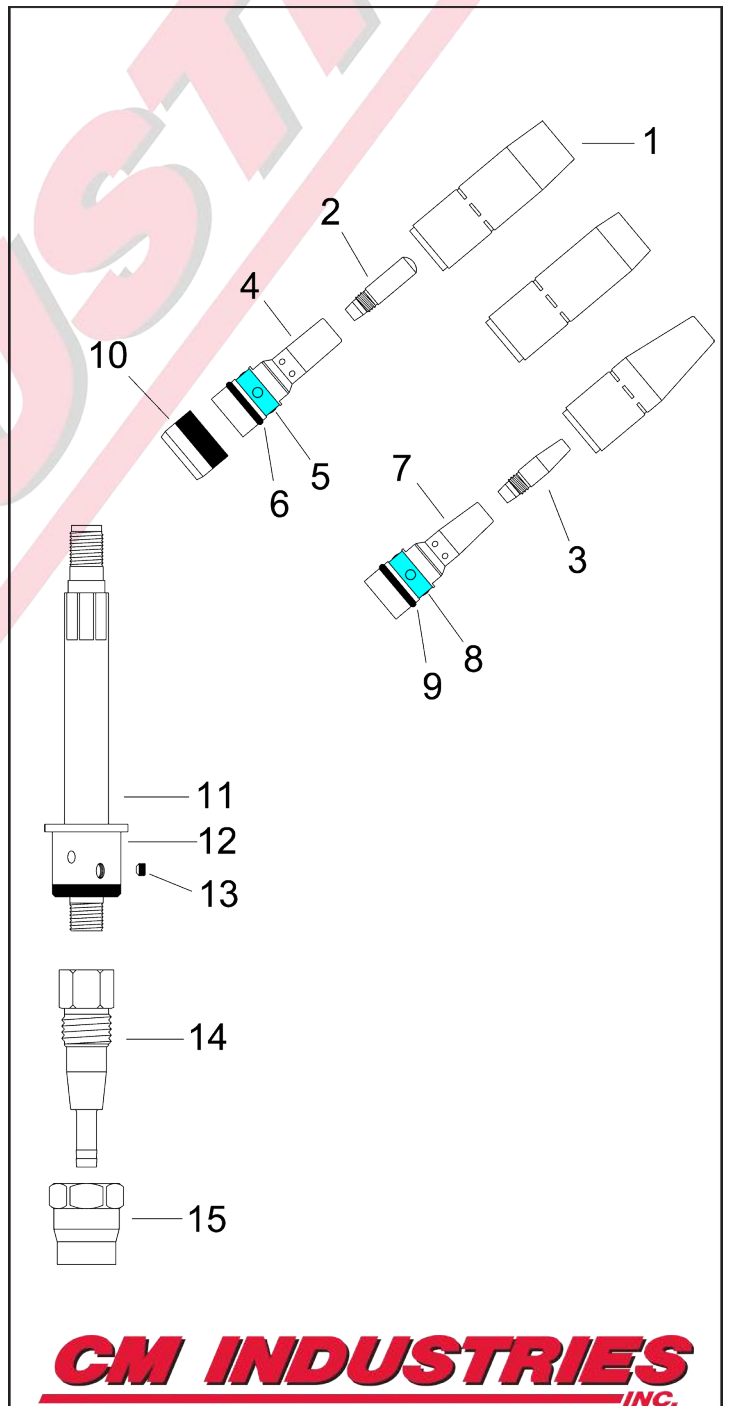
TRG 500AUTO

AIR-COOLED MIG GUN

Replacement Suitable for Tregaskiss®

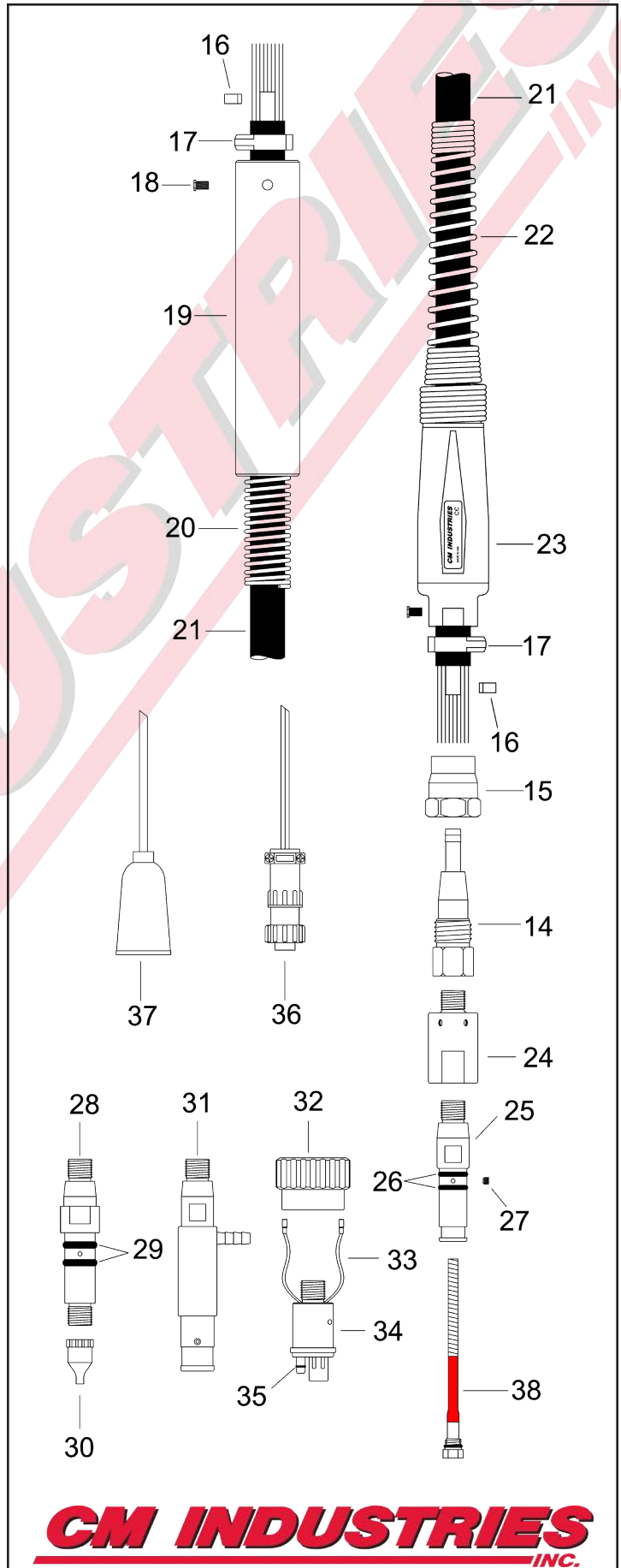
RATING	GUN ORDERING PART NUMBER	POWER PIN Direct Connect
500 Amp CO2 @ 100% Duty Cycle 350 Amp Mixed Gas @ 60% Duty Cycle Wire Capacity: 0.035" (0.9mm) - 3/32" (2.4mm)	R51xx-116 RE51xx-116 RLN51xx-116 RLF51xx-116 RM51xx-116 RPA51xx-116 RTW51xx-116	Tweco® #4 Euro Lincoln® "LN" Lincoln® "LF"/Powerfeed 10 Miller® Panasonic® Tweco® #5
	xx = Standard lengths of 4, 6, 8, and 10 ft. Custom lengths also available.	

#	Part Number	Description	
1.	R401-4-38	Nozzle, 3/8", Flush Tip	
	R401-4-50	Nozzle, 1/2", 1/8" Tip Recess	
	R401-4-62	Nozzle, 5/8", 1/8" Tip Recess	
	R401-4-75	Nozzle, 3/4", 1/8" Tip Recess	
	R401-41-50	Nozzle, 1/2", Extended Reach	
	R401-42-50	Nozzle, 1/2", Bottleneck, 1/8" Tip Recess	
	R401-48-50	Nozzle, 1/2", Bottleneck, 1/8" Tip Stickout	
	R401-5-50	Nozzle, H.D., 1/2", 1/4" Tip Recess	
	R401-5-62	Nozzle, H.D., 5/8", 1/4" Tip Recess	
	R401-5-75	Nozzle, H.D., 3/4", 1/4" Tip Recess	
	R401-6-50	Nozzle, H.D., 1/2", 1/8" Tip Recess	
	R401-6-62	Nozzle, H.D., 5/8", 1/8" Tip Recess	
	R401-6-75	Nozzle, H.D., 3/4", 1/8" Tip Recess	
	R401-7-62	Nozzle, H.D., 5/8", 1/4" Tip Recess, Brass	
	R401-7-75	Nozzle, H.D., 3/4", 1/4" Tip Recess, Brass	
	R401-7-87	Nozzle, H.D., 7/8", 1/4" Tip Recess, Brass	
	R401-8-62	Nozzle, 5/8", 1/8" Tip Stickout, Short Arc	
	R401-81-62	Nozzle, H.D., 5/8", 1/8" Tip Stickout, Short Arc	
	2.	CM "Taper-LOCK" Contact Tips	
155-1-030		H.D. Contact Tip, .030" (0.8mm)	
155-1-035		H.D. Contact Tip, .035" (0.9mm)	
155-1-040		H.D. Contact Tip, .040" (1.0mm)	
155-1-045		H.D. Contact Tip, .045" (1.2mm)	
155-1-364		H.D. Contact Tip, 3/64" (1.2mm)	
155-1-052		H.D. Contact Tip, .052" (1.4mm)	
155-1-062		H.D. Contact Tip, .062" (1.6mm)	
155-1-564		H.D. Contact Tip, 5/64" (2.0mm)	
155-1-332		H.D. Contact Tip, 3/32" (2.4mm)	
3.		155-2-030	H.D. Tapered Contact Tip, .030" (0.8mm)
		155-2-035	H.D. Tapered Contact Tip, .035" (0.9mm)
		155-2-040	H.D. Tapered Contact Tip, .040" (1.0mm)
	155-2-045	H.D. Tapered Contact Tip, .045" (1.2mm)	
	155-2-364	H.D. Tapered Contact Tip, 3/64" (1.2mm)	
	155-2-052	H.D. Tapered Contact Tip, .052" (1.4mm)	
	155-2-062	H.D. Tapered Contact Tip, .062" (1.6mm)	
4.	154-R505	Diffuser H.D., for CM Taper-LOCK Tip	
	154-1	Replacement Retaining Ring	
	154-2	Replacement O-Ring	
7.	154-R506	Diffuser, for CM Taper-LOCK Tip	
	154-1	Replacement Retaining Ring	
	154-2	Replacement O-Ring	
10.	R402-11	Neck Insulator	



CM INDUSTRIES
INC.

#	Part Number	Description
11.	R505-180	Neck w/ Body, 180°, Std.
	R505-22	Neck w/ Body, 22°
	R505-45	Neck w/ Body, 45°
	R505-60	Neck w/ Body, 60°
12.	R407	Replacement Body
13.	R407-2	Body Screw
14.	R408	Connector Cone
15.	R409	Cone Nut
16.	R413-5	Inner Tube Clamp
17.	R513-1	Outer Jacket Clamp
18.	R410-11	Mounting Screw, Automatic
19.	R410-10	Front Housing, Automatic
20.	R513-2	Spring Guard, Front
21.	R513-04CM	Unicable Assembly, 4'
	R513-06CM	Unicable Assembly, 6'
	R513-08CM	Unicable Assembly, 8'
	R513-10CM	Unicable Assembly, 10'
	R513-112CM	Unicable Assembly, 12'
	R513-115CM	Unicable Assembly, 15'
22.	B2520041-S	Strain Relief Spring
23.	B2520066	Strain Relief Kit
24.	R414-400CM	Power Pin Block
25.	R414-400	Power Pin Block
26.	R214	Power Pin, Tweco
27.	R414-1	O-Ring
28.	C44C	Liner Set Screw
29.	R214-1	Power Pin, Miller
30.	R414-11-2	O-Ring, Miller
31.	R214-116	Guide Cap, Miller .035"-1/16" Wire
	R214-332	Guide Cap, Miller 5/64"-3/32" Wire
32.	R214-2	Power Pin, Lincoln
33.	401-00-001	Adaptor Nut
34.	285-03-002	Male Pin w/ Lead
35.	R425-10CM	Power Pin, Euro
36.	285-00-002	O-Ring, Euro
37.	300-05-001	Electrical Plug, Miller
38.	300-05-002	Electrical Plug, Lincoln
39.	R415-35-6	Liner Assembly .035"-.045", 6'
	R415-116-6	Liner Assembly .045"-1/16", 6'
	R415-35-15	Liner Assembly .035"-.045", 15'
	R415-116-15	Liner Assembly .045"-1/16", 15'
	R415-564-15	Liner Assembly, 1/16-5/64", 15'
	R415-332-15	Liner Assembly, 5/64-3/32", 15'
	R415-35-2	Liner Assembly .035"-3/64", 15' Aluminum
	R415-116-2	Liner Assembly 3/64"-1/16", 15' Aluminum
	R415-35-0	Teflon Liner Assy., .035"-3/64", 15' Aluminum
	R415-116-0	Teflon Liner Assy., 3/64"-1/16", 15' Aluminum



WARNING!

Please Read All Safety Instructions



WARNING

- Read and follow the manufacturer's instructions, employer's safety practices, and Material Safety Data Sheets (MSDSs).
- Only qualified personnel should install, use, or service this material and/or equipment.



ELECTRIC SHOCK can kill.

- Always wear dry installing gloves.
- Do not touch live electrical parts.
- Always disconnect power source before hooking up or changing electrodes, nozzles and other parts.



WELDING SPARKS can cause fire or explosion

- Do not weld near flammable material.
- Do not weld on closed containers.
- Remove combustibles from the work area and/or provide a fire watch.
- Avoid oily or greasy clothing as a spark may ignite them.



LOUD NOISE can damage hearing.

- Always wear protective hearing devices to ensure protection when noise levels exceed OSHA standards.



ARC RAYS can injure eyes and burn skin.

- Always wear correct eye, ear, and body protection.
- Always wear a welding helmet with the proper grade filter lens. Protect yourself and others from spatter arc rays by using protective screens, barriers and welding curtains.
- Always wear protective gloves and clothing to cover exposed skin. This will aid in the prevention of arc and spatter burns.



FUMES AND GASES can be hazardous to your health.

- Keep your head out of the fumes.
- Use enough ventilation or exhaust at the arc to keep fumes and gases from your breathing zone, and general area.
- Fumes from cutting and welding can deplete air quality, causing injury or death. Always wear an air supplied respirator in confined areas, or if breathing air is not safe.

Read America Nation Standard Z49.1, "Safety in Welding, Cutting, and Allied Processes," available from America Welding Society, 550 N.W. LeJeune Rd., Miami, FL 33126;

OSHA Safety and health standards, available from U.S. Government Printing Office, Washington DC 20402

CM INDUSTRIES

INC.

505 OAKWOOD ROAD LAKE ZURICH, IL 60047

PH: 847-550-0033 FX: 847-550-0444

www.cmindustries.com