

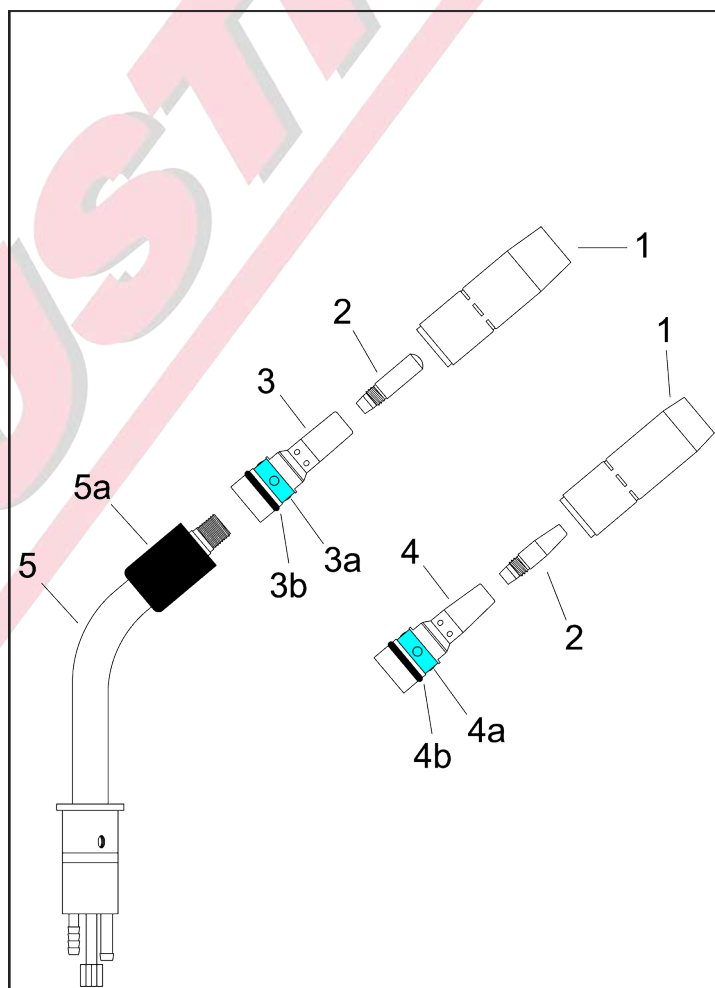
TRG 450W

WATER-COOLED MIG GUN

Replacement Suitable for Tregaskiss®

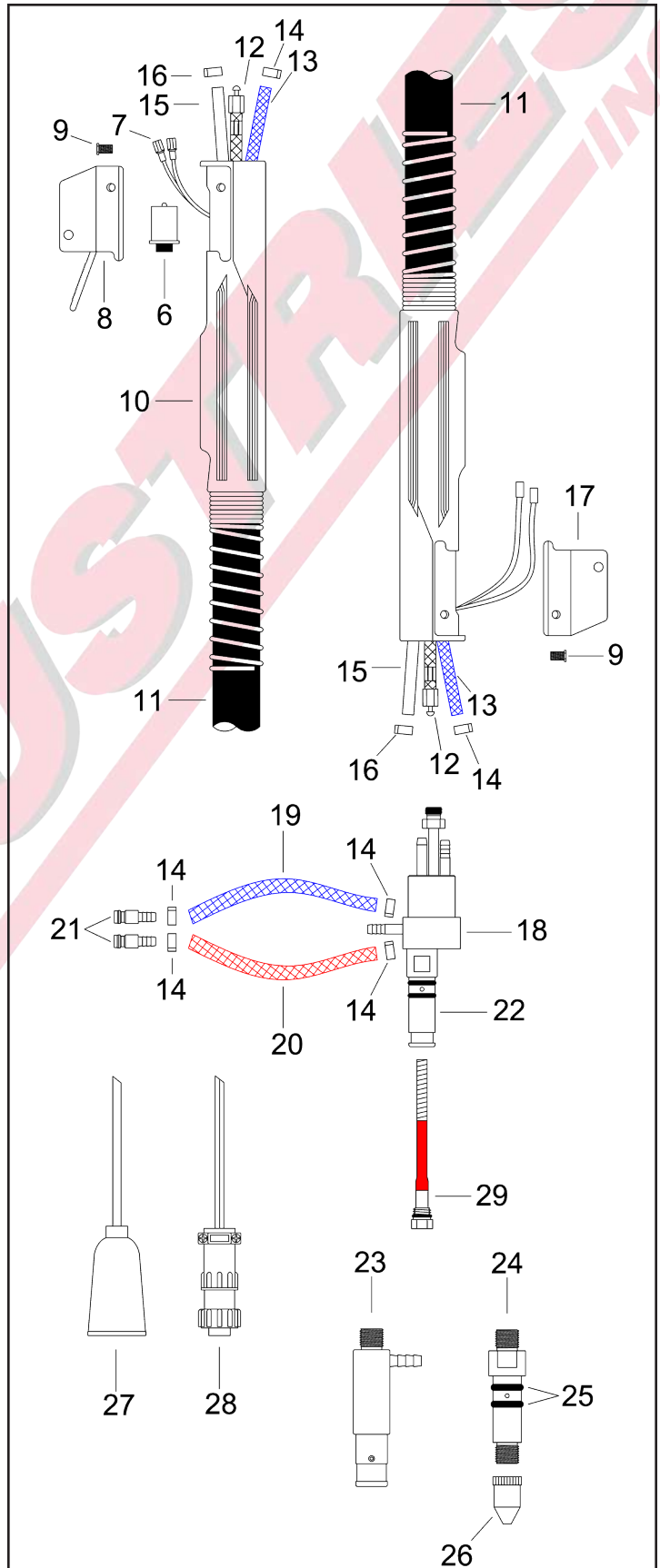
RATING	GUN ORDERING PART NUMBER	POWER PIN Direct Connect
450 Amp CO2 @ 80% Duty Cycle 325 Amp Mixed Gas @ 80% Duty Cycle Wire Capacity: 0.030" (0.8mm) - 5/64" (2.0mm)	R45xx-45	Tweco® #4
	RLN45xx-45	Lincoln® "LN"
	RLF45xx-45	Lincoln® "LF"/Powerfeed 10
	RM45xx-45	Miller®
xx = Standard lengths of 10, 12, 15, 20, and 25 ft. Custom lengths also available.		

#	Part Number	Description	
1.	R401-4-38	Nozzle, 3/8", Flush Tip	
	R401-4-50	Nozzle, 1/2", 1/8" Tip Recess	
	R401-4-62	Nozzle, 5/8", 1/8" Tip Recess	
	R401-4-75	Nozzle, 3/4", 1/8" Tip Recess	
	R401-5-50	Nozzle, H.D., 1/2", 1/4" Tip Recess	
	R401-5-62	Nozzle, H.D., 5/8", 1/4" Tip Recess	
	R401-5-75	Nozzle, H.D., 3/4", 1/4" Tip Recess	
	R401-6-50	Nozzle, H.D., 1/2", 1/8" Tip Recess	
	R401-6-62	Nozzle, H.D., 5/8", 1/8" Tip Recess	
	R401-6-75	Nozzle, H.D., 3/4", 1/8" Tip Recess	
	R401-7-62	Nozzle, H.D., 5/8", 1/4" Tip Recess, Brass	
	R401-7-75	Nozzle, H.D., 3/4", 1/4" Tip Recess, Brass	
	R401-7-87	Nozzle, H.D., 7/8", 1/4" Tip Recess, Brass	
	R401-8-62	Nozzle, 5/8", 1/8" Tip Stickout, Short Arc	
	R401-81-62	Nozzle, H.D., 5/8", 1/8" Tip Stickout, Short Arc	
	2.	CM "Taper-LOCK" Contact Tips	
		155-1-030	H.D. Contact Tip, .030" (0.8mm)
		155-1-035	H.D. Contact Tip, .035" (0.9mm)
		155-1-040	H.D. Contact Tip, .040" (1.0mm)
155-1-045		H.D. Contact Tip, .045" (1.2mm)	
155-1-364		H.D. Contact Tip, 3/64" (1.2mm)	
155-1-052		H.D. Contact Tip, .052" (1.4mm)	
155-1-062		H.D. Contact Tip, .062" (1.6mm)	
155-1-564		H.D. Contact Tip, 5/64" (2.0mm)	
155-1-332		H.D. Contact Tip, 3/32" (2.4mm)	
155-2-030		H.D. Tapered Contact Tip, .030" (0.8mm)	
155-2-035		H.D. Tapered Contact Tip, .035" (0.9mm)	
155-2-040		H.D. Tapered Contact Tip, .040" (1.0mm)	
155-2-045		H.D. Tapered Contact Tip, .045" (1.2mm)	
155-2-364		H.D. Tapered Contact Tip, 3/64" (1.2mm)	
155-2-052		H.D. Tapered Contact Tip, .052" (1.4mm)	
155-2-062		H.D. Tapered Contact Tip, .062" (1.6mm)	
3.		154-R505	Diffuser H.D., for CM Taper-LOCK Tip
3a.	154-1	Replacement Retaining Ring	
3b.	154-2	Replacement O-Ring	
4.	154-R506	Diffuser, for CM Taper-LOCK Tip	
4a.	154-1	Replacement Retaining Ring	
4b.	154-2	Replacement O-Ring	
5.	R455-45	Neck w/ Body, 45°	
	R455-60	Neck w/ Body, 60°	
	R455-180	Neck w/ Body, 180°	
5a.	R458-1	Neck Insulator	



CM INDUSTRIES
INC.

#	Part Number	Description
6.	R411-1	Switch Only
7.	R412-1	Switch Terminals
8.	R411-2	Switch Housing
9.	R411-3	Mounting Screw
10.	R610	Handle w/ Spring
11.	R663-1-10	Cable Cover, 10'
	R663-1-12	Cable Cover, 12'
	R663-1-15	Cable Cover, 15'
	R663-1-20	Cable Cover, 20'
	R663-1-25	Cable Cover, 25'
12.	R659-10	Power Cable, 10'
	R659-12	Power Cable, 12'
	R659-15	Power Cable, 15'
	R659-20	Power Cable, 20'
	R659-25	Power Cable, 25'
13.	R656-10	Water Hose, 10'
	R656-12	Water Hose, 12'
	R656-15	Water Hose, 15'
	R656-20	Water Hose, 20'
	R656-25	Water Hose, 25'
14.	R656-1	Hose Clamp
15.	R657	Conduit (sold per ft.)
16.	R657-1	Conduit Clamp
17.	R416-5	Control Housing Only
18.	R664-1	Quick Connector Power Block Assembly
19.	R658-1	Blue Water Line IN, 2'
20.	R658	Red Water Line OUT, 2'
21.	350-52-001	Male Water Fitting
22.	R664-12	Power Pin, Tweco #4
23.	R664-12	Power Pin, Lincoln "LN"
24.	R664-11-116	Power Pin, Miller
25.	R414-11-2	O-Ring, Miller
26.	R414-116	Guide Cap, Miller .035"-1/16" Wire
	R414-332	Guide Cap, Miller 5/64"-3/32" Wire
27.	300-05-002	Electrical Plug, Lincoln
28.	300-05-001	Electrical Plug, Miller
29.	R415-30-15	Liner Assembly .030", 15'
	R415-35-15	Liner Assembly .035"-.045", 15'
	R415-116-15	Liner Assembly .045"-1/16", 15'
	R415-564-15	Liner Assembly, 1/16-5/64", 15'
	R415-332-15	Liner Assembly, 5/64-3/32", 15'
	R415-35-2	Liner Assembly .035"-3/64", 15' Aluminum
	R415-116-2	Liner Assembly 3/64"-1/16", 15' Aluminum
	R415-35-0	Teflon Liner Assy., .035"-3/64", 15' Aluminum
	R415-116-0	Teflon Liner Assy., 3/64"-1/16", 15' Aluminum
	R415-35-25	Liner Assembly .035"-.045", 25'
	R415-116-25	Liner Assembly .045"-1/16", 25'
	R415-564-25	Liner Assembly, 1/16-5/64", 25'
	R415-332-25	Liner Assembly, 5/64-3/32", 25'



WARNING!

Please Read All Safety Instructions



WARNING

- Read and follow the manufacturer's instructions, employer's safety practices, and Material Safety Data Sheets (MSDSs).
- Only qualified personnel should install, use, or service this material and/or equipment.



ELECTRIC SHOCK can kill.

- Always wear dry installing gloves.
- Do not touch live electrical parts.
- Always disconnect power source before hooking up or changing electrodes, nozzles and other parts.



WELDING SPARKS can cause fire or explosion

- Do not weld near flammable material.
- Do not weld on closed containers.
- Remove combustibles from the work area and/or provide a fire watch.
- Avoid oily or greasy clothing as a spark may ignite them.



LOUD NOISE can damage hearing.

- Always wear protective hearing devices to ensure protection when noise levels exceed OSHA standards.



ARC RAYS can injure eyes and burn skin.

- Always wear correct eye, ear, and body protection.
- Always wear a welding helmet with the proper grade filter lens. Protect yourself and others from spatter arc rays by using protective screens, barriers and welding curtains.
- Always wear protective gloves and clothing to cover exposed skin. This will aid in the prevention of arc and spatter burns.



FUMES AND GASES can be hazardous to your health.

- Keep your head out of the fumes.
- Use enough ventilation or exhaust at the arc to keep fumes and gases from your breathing zone, and general area.
- Fumes from cutting and welding can deplete air quality, causing injury or death. Always wear an air supplied respirator in confined areas, or if breathing air is not safe.

Read America Nation Standard Z49.1, "Safety in Welding, Cutting, and Allied Processes," available from America Welding Society, 550 N.W. LeJeune Rd., Miami, FL 33126;

OSHA Safety and health standards, available from U.S. Government Printing Office, Washington DC 20402

CM INDUSTRIES

505 OAKWOOD ROAD LAKE ZURICH, IL 60047

PH: 847-550-0033 FX: 847-550-0444

www.cmindustries.com