

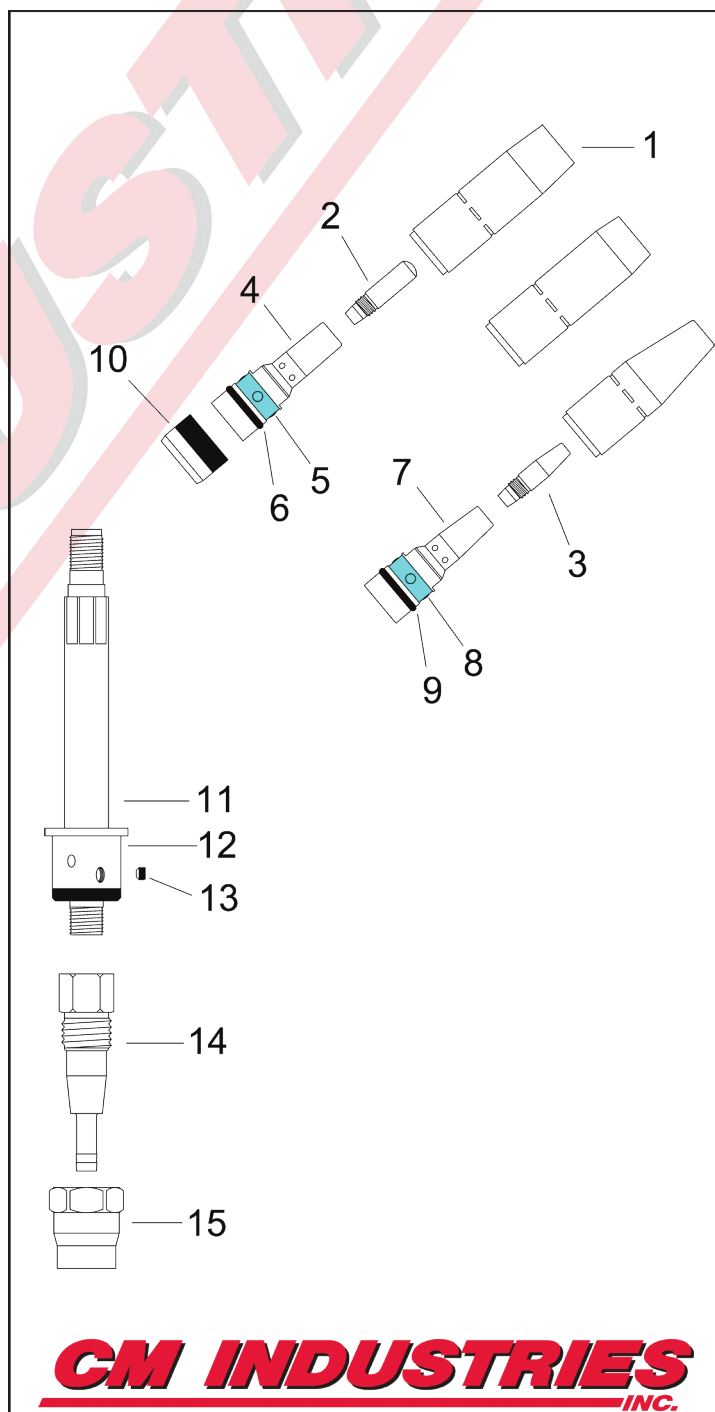
TRG 400AUTO

AIR-COOLED MIG GUN

Replacement Suitable for Tregaskiss®

RATING	GUN ORDERING PART NUMBER	POWER PIN Direct Connect
400 Amp CO2 @ 100% Duty Cycle 300 Amp Mixed Gas @ 100% Duty Cycle Wire Capacity: 0.035" (0.9mm) - 5/64" (2.0mm)	R41xx-45 RE41xx-45 RLN41xx-45 RLF41xx-45 RLPM41xx-45 RM41xx-45 RPA41xx-45	Tweco® #4 Euro Lincoln® "LN" Lincoln® "LF"/Powerfeed 10 Lincoln® Power MIG™ Miller® Panasonic®
xx = Standard lengths of 4, 6, 8, and 10 ft. Custom lengths also available.		

#	Part Number	Description
1.	R401-4-38 R401-4-50 R401-4-62 R401-4-75	Nozzle, 3/8", Flush Tip Nozzle, 1/2", 1/8" Tip Recess Nozzle, 5/8", 1/8" Tip Recess Nozzle, 3/4", 1/8" Tip Recess
	R401-41-50 R401-42-50 R401-48-50	Nozzle, 1/2", Extended Reach Nozzle, 1/2", Bottleneck, 1/8" Tip Recess Nozzle, 1/2", Bottleneck, 1/8" Tip Stickout
	R401-5-50 R401-5-62 R401-5-75	Nozzle, H.D., 1/2", 1/4" Tip Recess Nozzle, H.D., 5/8", 1/4" Tip Recess Nozzle, H.D., 3/4", 1/4" Tip Recess
	R401-6-50 R401-6-62 R401-6-75	Nozzle, H.D., 1/2", 1/8" Tip Recess Nozzle, H.D., 5/8", 1/8" Tip Recess Nozzle, H.D., 3/4", 1/8" Tip Recess
	R401-7-62 R401-7-75 R401-7-87	Nozzle, H.D., 5/8", 1/4" Tip Recess, Brass Nozzle, H.D., 3/4", 1/4" Tip Recess, Brass Nozzle, H.D., 7/8", 1/4" Tip Recess, Brass
	R401-8-62	Nozzle, 5/8", 1/8" Tip Stickout, Short Arc
	R401-81-62	Nozzle, H.D., 5/8", 1/8" Tip Stickout, Short Arc
2.	CM "Taper-LOCK" Contact Tips 155-1-030 155-1-035 155-1-040 155-1-045 155-1-364 155-1-052 155-1-062 155-1-564 155-1-332	H.D. Contact Tip, .030" (0.8mm) H.D. Contact Tip, .035" (0.9mm) H.D. Contact Tip, .040" (1.0mm) H.D. Contact Tip, .045" (1.2mm) H.D. Contact Tip, 3/64" (1.2mm) H.D. Contact Tip, .052" (1.4mm) H.D. Contact Tip, .062" (1.6mm) H.D. Contact Tip, 5/64" (2.0mm) H.D. Contact Tip, 3/32" (2.4mm)
3.	155-2-030 155-2-035 155-2-040 155-2-045 155-2-364 155-2-052 155-2-062	H.D. Tapered Contact Tip, .030" (0.8mm) H.D. Tapered Contact Tip, .035" (0.9mm) H.D. Tapered Contact Tip, .040" (1.0mm) H.D. Tapered Contact Tip, .045" (1.2mm) H.D. Tapered Contact Tip, 3/64" (1.2mm) H.D. Tapered Contact Tip, .052" (1.4mm) H.D. Tapered Contact Tip, .062" (1.6mm)
4.	154-R505	Diffuser H.D., for CM Taper-LOCK Tip
5.	154-1	Replacement Retaining Ring
6.	154-2	Replacement O-Ring
7.	154-R506	Diffuser, for CM Taper-LOCK Tip
8.	154-1	Replacement Retaining Ring
9.	154-2	Replacement O-Ring
10.	R402-11	Neck Insulator



CM INDUSTRIES
INC.

#	Part Number	Description
11.	R405-180	Neck w/ Body, 180°, Std.
	R405-22	Neck w/ Body, 22°
	R405-45	Neck w/ Body, 45°
	R405-60	Neck w/ Body, 60°
12.	R407	Replacement Body
13.	R407-2	Body Screw
14.	R408	Connector Cone
15.	R409	Cone Nut
16.	R413-5	Inner Tube Clamp
17.	R413-1	Outer Jacket Clamp
18.	R410-11	Mounting Screw, Automatic
19.	R410-10	Front Housing, Automatic
20.	R413-2	Spring Guard, Front
21.	R413-04	Unicable Assembly w/ Handles, 4'
	R413-06	Unicable Assembly w/ Handles, 6'
	R413-08	Unicable Assembly w/ Handles, 8'
	R413-10	Unicable Assembly w/ Handles, 10'
22.	B2520041-S	Strain Relief Spring
23.	B2520066	Strain Relief Kit
24.	R414-400CM	Power Pin Block
25.	R414-400	Power Pin Block
26.	R214	Power Pin, Tweco
27.	R414-1	O-Ring
28.	C44C	Liner Set Screw
29.	R214-1	Power Pin, Miller
30.	R414-11-2	O-Ring, Miller
31.	R214-116	Guide Cap, Miller .035"-1/16" Wire
	R214-332	Guide Cap, Miller 5/64"-3/32" Wire
32.	R214-2	Power Pin, Lincoln
33.	401-00-001	Adaptor Nut
34.	285-03-002	Male Pin w/ Lead
35.	R425-10CM	Power Pin, Euro
36.	285-00-002	O-Ring, Euro
37.	300-05-001	Electrical Plug, Miller
38.	300-05-002	Electrical Plug, Lincoln
39.	R415-35-6	Liner Assembly .035"-.045", 6'
	R415-116-6	Liner Assembly .045"-1/16", 6'
	R415-35-15	Liner Assembly .035"-.045", 15'
	R415-116-15	Liner Assembly .045"-1/16", 15'
	R415-564-15	Liner Assembly, 1/16"-5/64", 15'
	R415-332-15	Liner Assembly, 5/64"-3/32", 15'
	R415-35-2	Liner Assembly .035"-3/64", 15' Aluminum
	R415-116-2	Liner Assembly 3/64"-1/16", 15' Aluminum
	R415-35-0	Teflon Liner Assy., .035"-3/64", 15' Aluminum
	R415-116-0	Teflon Liner Assy., 3/64"-1/16", 15' Aluminum

