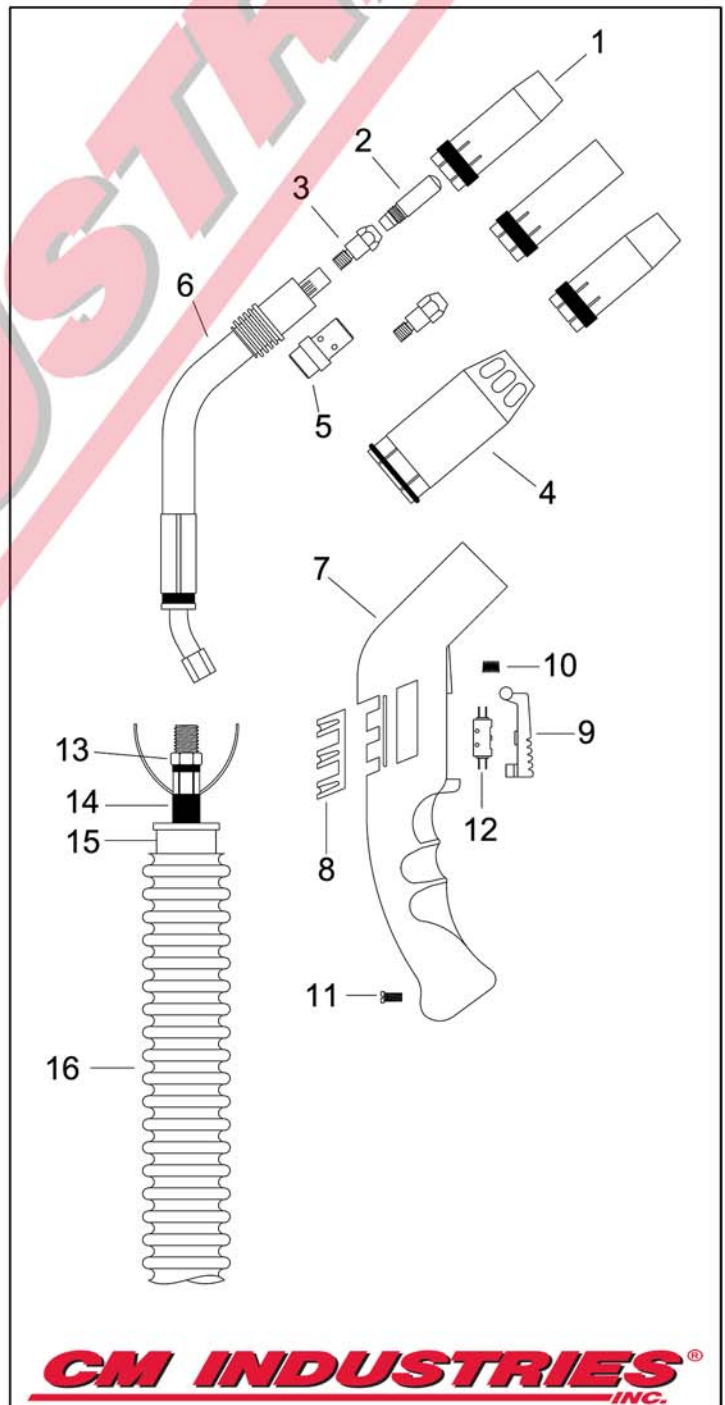


# SM36A

# SMOKE EXTRACTOR AIR-COOLED MIG GUN

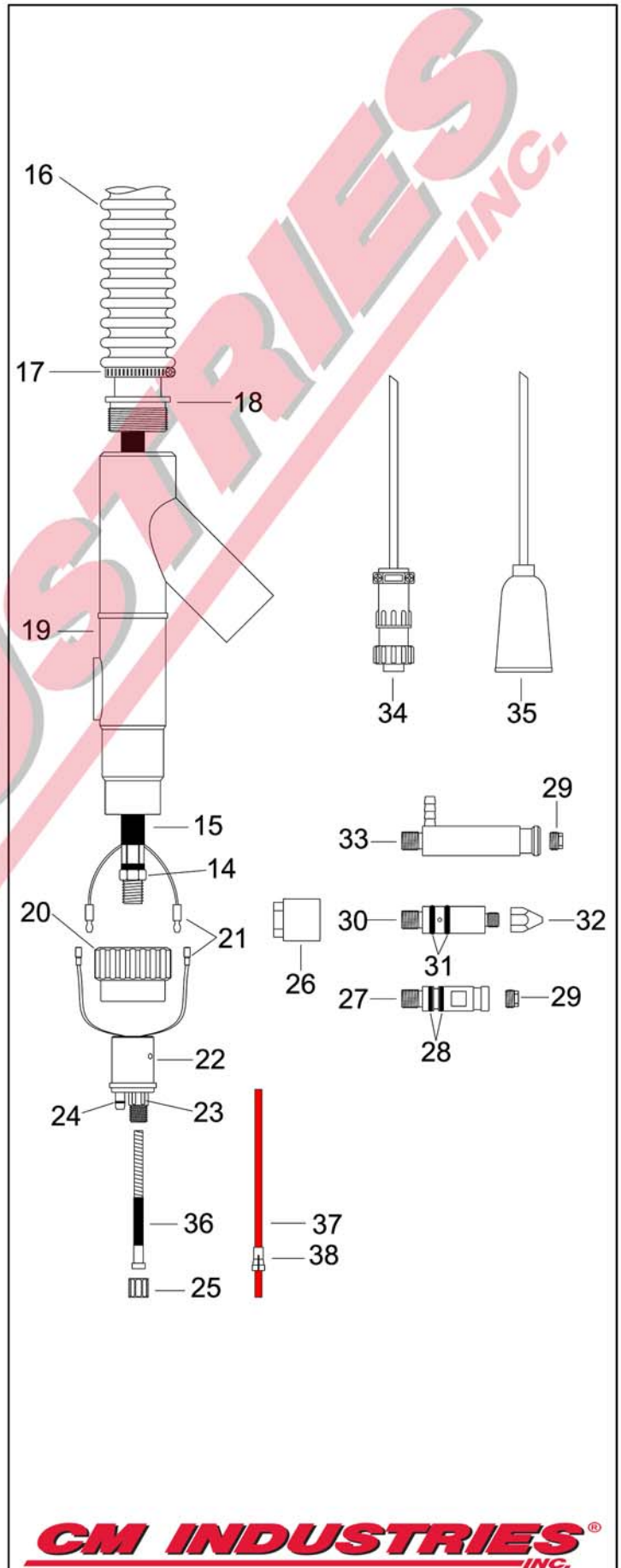
RATING	GUN ORDERING PART NUMBER	GUN PLUG Direct Connect
<b>360 Amp CO2 @ 60% Duty Cycle</b>  <b>320 Amp Mixed Gas @ 60% Duty Cycle</b>  <b>Wire Capacity: 0.030" (0.8mm) - 0.062" (1.6mm)</b>	725-36-0xx	<b>Euro</b>
	725-36-Lxx	<b>Lincoln® "LN"</b>
	725-36-Mxx	<b>Miller®</b>
	725-36-Txx	<b>Tweco®</b>
xx = Standard lengths of 10, 12, 15, 20 and 25 ft. Custom lengths also available.		

#	Part Number	Description
1.	165-36-001 165-36-002 165-36-011	Nozzle, Conical, 5/8" I.D., Std. Nozzle, Cylindrical, 3/4" I.D. Nozzle, Conical Small, 9/16" I.D.
<b>CM Taper-LOCK Contact Tips</b>		
2.	155-1-030 155-1-035 155-1-040 155-1-045 155-1-364 155-1-052 155-1-062	H.D. Contact Tip, .030" (0.8mm) H.D. Contact Tip, .035" (0.9mm) H.D. Contact Tip, .040" (1.0mm) H.D. Contact Tip, .045" (1.2mm) H.D. Contact Tip, 3/64" (1.2mm) H.D. Contact Tip, .052" (1.4mm) H.D. Contact Tip, .062" (1.6mm)
3.	160-06-036TL 160-06-136TL	Tip Holder for CM Taper-LOCK Tip Tip Holder, Long, for CM Taper-LOCK Tip
4.	165-36-400	Fume Nozzle
5.	046-36-001 046-36-002	Insulator/Gas Diffuser, White, Std. Insulator/Gas Diffuser, Heat Resistant Black
6.	052-36-045	Swan Neck
7.	171-66-101	Handle Assembly (Items 7-11)
8.	171-66-105	Fume Controller
9.	171-66-109	Trigger
10.	171-66-129	Trigger Spring
11.	170-66-005	Handle Screw
12.	171-66-123	Micro Switch
13.	290-01-010	Hex Nut
14.	210-36-510 210-36-512 210-36-515 210-36-520 210-36-525	Power Cable, 10' Power Cable, 12' Power Cable, 15' Power Cable, 20' Power Cable, 25'
15.	261-25-005	Front Connector
16.	219-25-010 219-25-012 219-25-015 219-25-020 219-25-025	Vacuum Hose, 10' Vacuum Hose, 12' Vacuum Hose, 15' Vacuum Hose, 20' Vacuum Hose, 25'



**CM INDUSTRIES**  
INC.

#	Part Number	Description
17.	261-25-004	Hose Clamp
18.	261-25-003	Rear Aluminum Connector
19.	261-25-002	Adaptor Support
20.	401-00-001	Adaptor Nut
21.	300-05-010 300-05-009	Male Electrical Connector Female Electrical Connector
22.	401-02-014	Connector Block, Complete
23.	285-03-002	Male Pin w/ Lead
24.	285-00-002	O-Ring, Connector Block
25.	401-01-001	Liner Retaining Nut
26.	401-02-012	Connector Plug Block
27.	401-02-016	Connector Plug, Hobart/Tweco/Lincoln P.M.
28.	C224	O-Ring
29.	401-01-004	Liner Retaining Plug
30.	401-02-017	Connector Plug, Miller
31.	M079-974	O-Ring, Miller
32.	401-01-002	Liner Nut, Miller
33.	401-02-015	Connector Plug, Lincoln
34.	300-05-001	Electrical Plug, Miller
35.	300-05-002	Electrical Plug, Lincoln
36.	241-26-016 241-22-016 241-23-016	Liner #26, 15', .023"-.035" Liner #22, 15', .035"-.045", Std. Liner #23, 15', .052"-1/16"
	241-26-027 241-22-027 241-23-027	Liner #26, 25', .023"-.035" Liner #22, 25', .035"-.045" Liner #23, 25', .052"-1/16"
37.	255-18-010 255-18-012 255-18-015 255-18-020	Teflon Liner #18, 10', .023"-.035" Teflon Liner #18, 12', .023"-.035" Teflon Liner #18, 15', .023"-.035" Teflon Liner #18, 20', .023"-.035"
	255-10-010 255-10-012 255-10-015 255-10-020	Teflon Liner #10, 10', .035"-.045" Teflon Liner #10, 12', .035"-.045" Teflon Liner #10, 15', .035"-.045" Teflon Liner #10, 20', .035"-.045"
	255-05-010 255-05-012 255-05-015 255-05-020	Teflon Liner #5, 10', .045"-1/16" Teflon Liner #5, 12', .045"-1/16" Teflon Liner #5, 15', .045"-1/16" Teflon Liner #5, 20', .045"-1/16"
38.	259-10-001 259-05-001	Repl. Collet, Teflon Liner #10 & #18 Repl. Collet, Teflon Liner #5



# WARNING!

## Please read all Safety Instructions



# WARNING

- Read and follow the manufacturer's instructions, employer's safety practices, and Material Safety Data Sheets (MSDSs).
- Only qualified personnel should install, use, or service this material and/or equipment.



**ELECTRIC SHOCK can kill.**

- Always wear dry insulating gloves.
- Do not touch live electrical parts.
- Always disconnect power source before hooking up or changing electrodes, nozzles and other parts.



**WELDING SPARKS can cause fire or explosion**

- Do not weld near flammable material.
- Do not weld on closed containers.
- Remove combustibles from the work area and/or provide a fire watch.
- Avoid oily or greasy clothing as a spark may ignite them.



**LOUD NOISE can damage hearing.**

- Always wear protective hearing devices to ensure protection when noise levels exceed OSHA standards.



**ARC RAYS can injure eyes and burn skin.**

- Always wear correct eye, ear, and body protection.
- Always wear a welding helmet with the proper grade filter lens. Protect yourself and others from spatter arc rays by using protective screens, barriers and welding curtains.
- Always wear protective gloves and clothing to cover exposed skin. This will aid in the prevention of arc and spatter burns.



**FUMES AND GASES can be hazardous to your health.**

- Keep your head out of the fumes.
- Use enough ventilation or exhaust at the arc to keep fumes and gases from your breathing zone, and general area.
- Fumes from cutting and welding can deplete air quality, causing injury or death. Always wear an air supplied respirator in confined areas, or if breathing air is not safe.

Read American National Standard Z49.1, "Safety in Welding, Cutting, and Allied Processes," available from American Welding Society, 550 N.W. LeJeune Rd., Miami, FL 33126;  
 OSHA Safety and health standards, available from U.S. Government Printing Office, Washington DC 20402

**CM INDUSTRIES<sup>®</sup>**  
**INC.**

505 OAKWOOD RD. LAKE ZURICH, IL 60047 USA  
 PHONE: 847-550-0033 FAX: 847-550-0444  
[www.cmindustries.com](http://www.cmindustries.com)