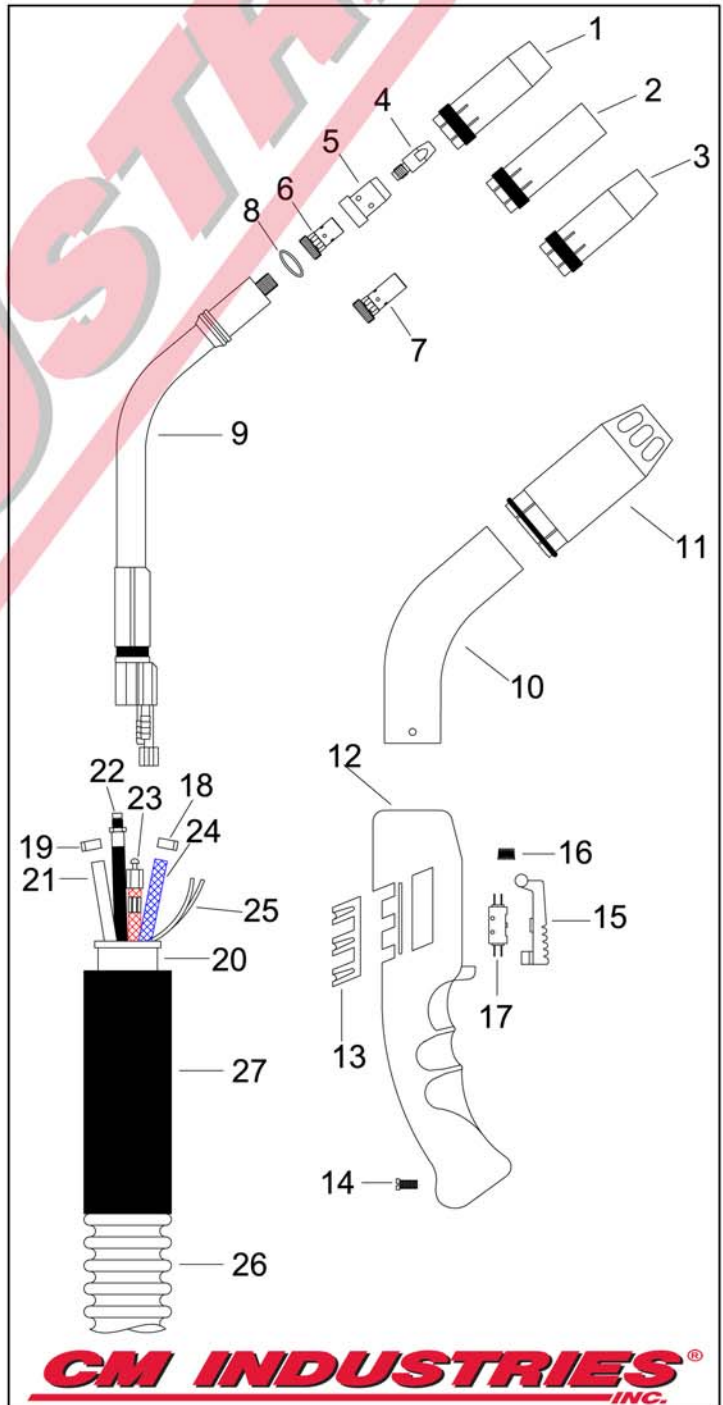


# SM501W

# SMOKE EXTRACTOR WATER-COOLED MIG GUN

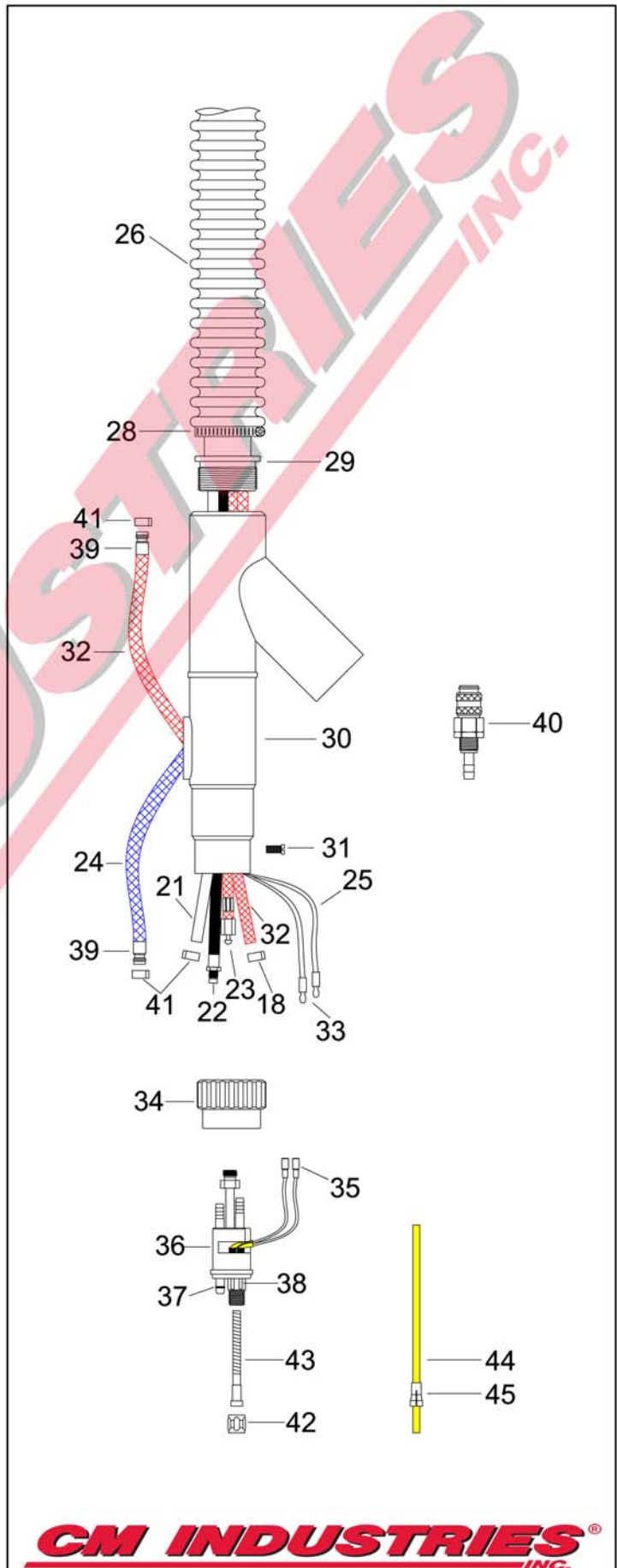
RATING	GUN ORDERING PART NUMBER	GUN PLUG Direct Connect
500 Amp CO2 @ 60% Duty Cycle	725-52-0xx	Euro
400 Amp Mixed Gas @ 60% Duty Cycle	725-52-Mxx	Miller®
Wire Capacity: 0.030" (0.8mm) - 3/32" (2.4mm)	725-52-Lxx	Lincoln® "LN"
xx = Standard lengths of 10, 12, 15, 20 and 25 ft. Custom lengths also available.		

#	Part Number	Description
1.	165-52-001 165-52-305	Nozzle, Conical, 5/8" I.D., Std. Nozzle, Conical Heavy Duty, 5/8" I.D.
2.	165-52-002	Nozzle, Cylindrical, 3/4" I.D.
3.	165-52-011 165-52-111	Nozzle, Conical Small, 9/16" I.D. Nozzle, Conical Super Small, 7/16" I.D.
4.	150-08-130 150-09-130 150-10-130 150-12-130 150-14-130 150-16-130 150-20-130 150-24-130	Contact Tip, M8, .030" 0.8mm Contact Tip, M8, .035" 0.9mm Contact Tip, M8, .040" 1.0mm Contact Tip, M8, .045" 1.2mm, Std. Contact Tip, M8, .052" 1.4mm Contact Tip, M8, 1/16" 1.6mm Contact Tip, M8, 5/64" 2.0mm Contact Tip, M8, 3/32" 2.4mm
5.	046-52-002 046-52-003	Insulator/Gas Diffuser, Std. Insulator/Gas Diffuser, High Temp.
6.	160-08-402 160-06-402	Contact Tip Holder, M8, Std. Contact Tip Holder, M6
7.	160-08-404 160-06-404	Contact Tip Holder, Long, M8, Flush Contact Tip Holder, Long, M6, Flush
8.	064-52-002	Insulating Washer
9.	052-52-045	Swan Neck
10.	171-66-104	Outer Neck
11.	165-52-400	Fume Nozzle
12.	171-66-102	Handle Assembly (Items 12-16)
13.	171-66-105	Fume Controller
14.	170-66-005	Handle Screw
15.	171-66-109	Trigger
16.	171-66-129	Trigger Spring
17.	171-66-123	Micro Switch
18.	350-61-095	Hose Clamp w/ Bridge, 9.5mm
19.	350-60-087	Hose Clamp, 8.7mm
20.	261-52-005	Front Connector



**CM INDUSTRIES**  
INC.

#	Part Number	Description
Items 21-26 are available in lengths 10, 12, 15, 20, and 25 feet		
21.	310-55-0__	Gas Hose
22.	235-52-0__	Wire Conduit
23.	225-52-0__	Power Cable
24.	310-52-0__	Water Hose, IN, Blue
25.	300-05-0__	Trigger Wire
26.	219-52-0__	Flex Hose
27.	216-55-005	Leather Hose, 5'
28.	261-52-004	Hose Clamp
29.	261-52-003	Rear Aluminum Connector
30.	261-52-002	Adaptor Support
31.	285-01-001	Adaptor Support Screw
32.	310-53-002	Water Hose, OUT, Red, 2'
33.	300-05-010	Male Electrical Connector
34.	401-00-001	Adaptor Nut
35.	300-05-009	Female Electrical Connector
36.	401-02-052	Adaptor Block
37.	285-00-002	O-Ring, Adaptor Block
38.	285-03-002	Male Pin w/ Lead
39.	350-52-001	Male Water Fitting
40.	350-65-002	Female Quick Disconnect
41.	350-60-095	Hose Clamp, 9.5mm
42.	401-01-001	Liner Retaining Nut
43.	241-02-016	Liner #2, 15' .035"-.045", Std.
	241-03-016	Liner #3, 15' .052"-1/16"
	241-04-016	Liner #4, 15' 5/64"-3/32"
	241-02-027	Liner #2, 25' .035"-.045"
	241-03-027	Liner #3, 25' .052"-1/16"
	241-04-027	Liner #4, 25' 5/64"-3/32"
44.	255-10-010	Teflon Liner #10, 10' .035"-.045"
	255-10-012	Teflon Liner #10, 12' .035"-.045"
	255-10-015	Teflon Liner #10, 15' .035"-.045"
	255-05-010	Teflon Liner #5, 10' .045"-1/16"
	255-05-012	Teflon Liner #5, 12' .045"-1/16"
	255-05-015	Teflon Liner #5, 15' .045"-1/16"
45.	259-05-001	Repl. Collet, Teflon Liner #5
	259-10-001	Repl. Collet, Teflon Liner #10 & #18



# WARNING!

## Please read all Safety Instructions



# WARNING

- Read and follow the manufacturer's instructions, employer's safety practices, and Material Safety Data Sheets (MSDSs).
- Only qualified personnel should install, use, or service this material and/or equipment.



### **ELECTRIC SHOCK can kill.**

- Always wear dry insulating gloves.
- Do not touch live electrical parts.
- Always disconnect power source before hooking up or changing electrodes, nozzles and other parts.



### **WELDING SPARKS can cause fire or explosion**

- Do not weld near flammable material.
- Do not weld on closed containers.
- Remove combustibles from the work area and/or provide a fire watch.
- Avoid oily or greasy clothing as a spark may ignite them.



### **LOUD NOISE can damage hearing.**

- Always wear protective hearing devices to ensure protection when noise levels exceed OSHA standards.



### **ARC RAYS can injure eyes and burn skin.**

- Always wear correct eye, ear, and body protection.
- Always wear a welding helmet with the proper grade filter lens. Protect yourself and others from spatter arc rays by using protective screens, barriers and welding curtains.
- Always wear protective gloves and clothing to cover exposed skin. This will aid in the prevention of arc and spatter burns.



### **FUMES AND GASES can be hazardous to your health.**

- Keep your head out of the fumes.
- Use enough ventilation or exhaust at the arc to keep fumes and gases from your breathing zone, and general area.
- Fumes from cutting and welding can deplete air quality, causing injury or death. Always wear an air supplied respirator in confined areas, or if breathing air is not safe.

Read American National Standard Z49.1, "Safety in Welding, Cutting, and Allied Processes," available from American Welding Society, 550 N.W. LeJeune Rd., Miami, FL 33126;  
 OSHA Safety and health standards, available from U.S. Government Printing Office, Washington DC 20402

## **CM INDUSTRIES<sup>®</sup>**

**INC.**

505 OAKWOOD RD. LAKE ZURICH, IL 60047 USA  
 PHONE: 847-550-0033 FAX: 847-550-0444  
[www.cmindustries.com](http://www.cmindustries.com)