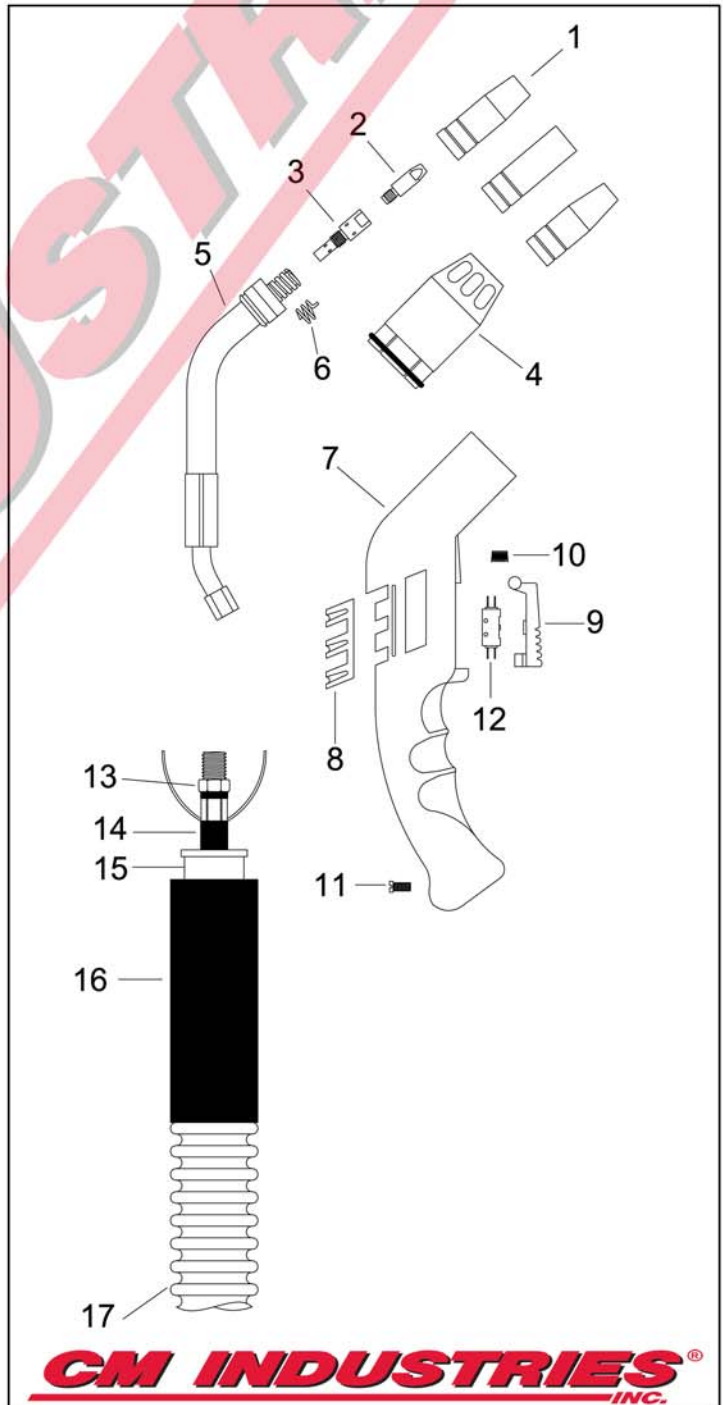


SM25A

SMOKE EXTRACTOR AIR-COOLED MIG GUN

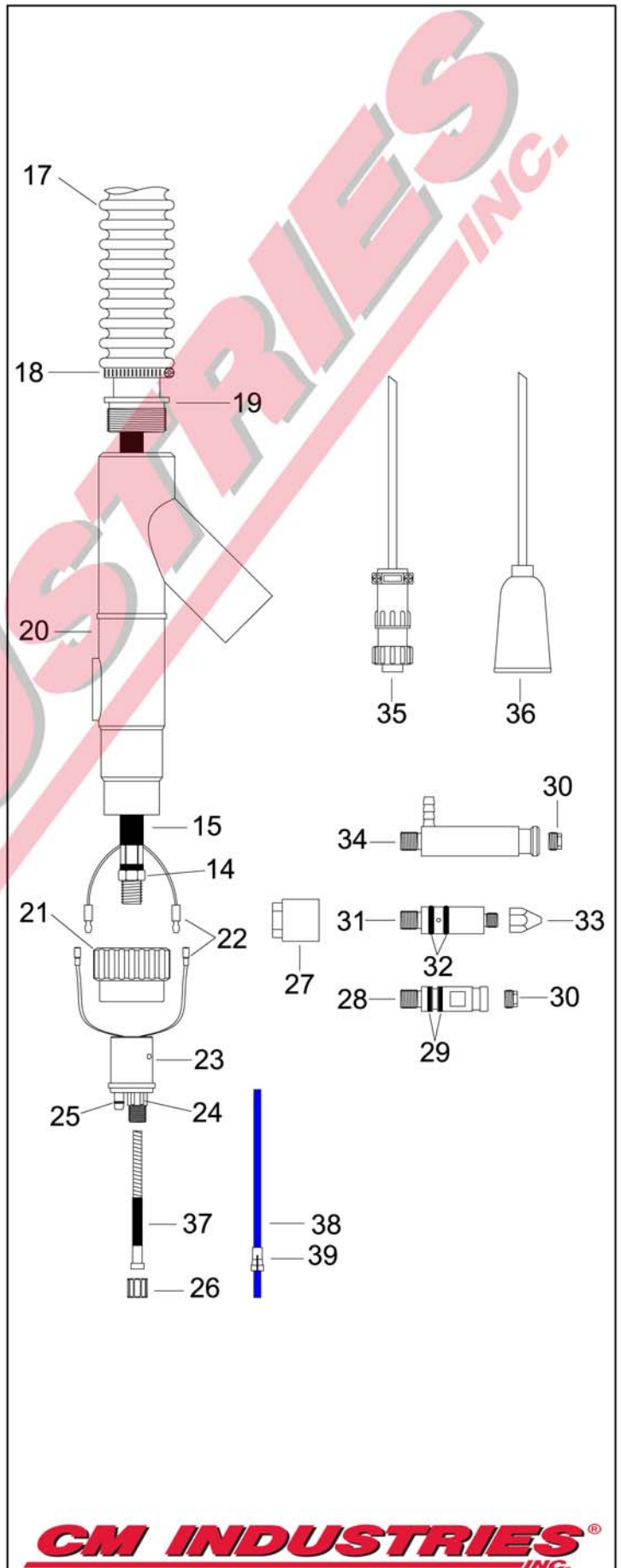
| RATING | GUN ORDERING PART NUMBER | GUN PLUG Direct Connect |
|---|--------------------------|----------------------------|
| 230 Amp CO2 @ 60% Duty Cycle 200 Amp Mixed Gas @ 60% Duty Cycle Wire Capacity: 0.030" (0.8mm) - 0.045" (1.2mm) | 725-25-0xx | Euro |
| | 725-25-Lxx | Lincoln® "LN" |
| | 725-25-Mxx | Miller® |
| | 725-25-TXX | Tweco® |
| xx = Standard lengths of 10, 12, 15, 20 and 25 ft. Custom lengths also available. | | |

| # | Part Number | Description |
|-----|-------------|------------------------------------|
| 1. | 165-25-001 | Nozzle, Conical, 9/16" I.D., Std. |
| | 165-25-002 | Nozzle, Cylindrical, 11/16" I.D. |
| | 165-25-011 | Nozzle, Conical Small, 7/16" I.D. |
| 2. | 150-06-120 | Contact Tip, M6, .024" 0.6mm |
| | 150-08-120 | Contact Tip, M6, .030" 0.8mm |
| | 150-09-120 | Contact Tip, M6, .035" 0.9mm, Std. |
| | 150-10-120 | Contact Tip, M6, .040" 1.0mm |
| | 150-12-120 | Contact Tip, M6, .045" 1.2mm |
| 3. | 160-06-025 | Contact Tip Holder, M6, Std. |
| 4. | 165-25-400 | Fume Nozzle |
| 5. | 052-25-045 | Swan Neck |
| 6. | 035-25-002 | Nozzle Spring |
| 7. | 171-66-101 | Handle Assembly (Items 7-11) |
| 8. | 171-66-105 | Fume Controller |
| 9. | 171-66-109 | Trigger |
| 10. | 171-66-129 | Trigger Spring |
| 11. | 170-66-005 | Handle Screw |
| 12. | 171-66-123 | Micro Switch |
| 13. | 290-01-010 | Hex Nut |
| 14. | 210-25-510 | Power Cable, 10' |
| | 210-25-512 | Power Cable, 12' |
| | 210-25-515 | Power Cable, 15' |
| | 210-25-520 | Power Cable, 20' |
| | 210-25-525 | Power Cable, 25' |
| 15. | 261-25-005 | Front Connector |
| 16. | 216-55-005 | Leather Hose, 4' |
| 17. | 219-25-010 | Flex Hose, 10' |
| | 219-25-012 | Flex Hose, 12' |
| | 219-25-015 | Flex Hose, 15' |
| | 219-25-020 | Flex Hose, 20' |
| | 219-25-025 | Flex Hose, 25' |



CM INDUSTRIES
INC.

| # | Part Number | Description |
|-----|--|--|
| 18. | 261-25-004 | Hose Clamp |
| 19. | 261-25-003 | Rear Aluminum Connector |
| 20. | 261-25-002 | Adaptor Support |
| 21. | 401-00-001 | Adaptor Nut |
| 22. | 300-05-010 300-05-009 | Male Electrical Connector Female Electrical Connector |
| 23. | 401-02-014 | Connector Block, Complete |
| 24. | 285-03-002 | Male Pin w/ Lead |
| 25. | 285-00-002 | O-Ring, Connector Block |
| 26. | 401-01-001 | Liner Retaining Nut |
| 27. | 401-02-012 | Connector Plug Block |
| 28. | 401-02-016 | Connector Plug, Hobart/Tweco/Lincoln P.M. |
| 29. | C224 | O-Ring |
| 30. | 401-01-004 | Liner Retaining Plug |
| 31. | 401-02-017 | Connector Plug, Miller |
| 32. | M079-974 | O-Ring, Miller |
| 33. | 401-01-002 | Liner Nut, Miller |
| 34. | 401-02-015 | Connector Plug, Lincoln |
| 35. | 300-05-001 | Electrical Plug, Miller |
| 36. | 300-05-002 | Electrical Plug, Lincoln |
| 37. | 241-26-016 241-22-016 | Liner #26, 15', .023"-.035" Liner #22, 15', .035"-.045" |
| 38. | 255-18-010 255-18-010 255-18-010 | Teflon Liner #18, 10', .023"-.035" Teflon Liner #18, 10', .023"-.035" Teflon Liner #18, 10', .023"-.035" |
| | 255-10-010 255-10-012 255-10-015 | Teflon Liner #10, 10', .035"-.045" Teflon Liner #10, 12', .035"-.045" Teflon Liner #10, 15', .035"-.045" |
| 39. | 259-10-001 | Repl. Collet, Teflon Liner #10 & #18 |



WARNING!

Please read all Safety Instructions



WARNING

- Read and follow the manufacturer's instructions, employer's safety practices, and Material Safety Data Sheets (MSDSs).
- Only qualified personnel should install, use, or service this material and/or equipment.



ELECTRIC SHOCK can kill.

- Always wear dry insulating gloves.
- Do not touch live electrical parts.
- Always disconnect power source before hooking up or changing electrodes, nozzles and other parts.



WELDING SPARKS can cause fire or explosion

- Do not weld near flammable material.
- Do not weld on closed containers.
- Remove combustibles from the work area and/or provide a fire watch.
- Avoid oily or greasy clothing as a spark may ignite them.



LOUD NOISE can damage hearing.

- Always wear protective hearing devices to ensure protection when noise levels exceed OSHA standards.



ARC RAYS can injure eyes and burn skin.

- Always wear correct eye, ear, and body protection.
- Always wear a welding helmet with the proper grade filter lens. Protect yourself and others from spatter arc rays by using protective screens, barriers and welding curtains.
- Always wear protective gloves and clothing to cover exposed skin. This will aid in the prevention of arc and spatter burns.



FUMES AND GASES can be hazardous to your health.

- Keep your head out of the fumes.
- Use enough ventilation or exhaust at the arc to keep fumes and gases from your breathing zone, and general area.
- Fumes from cutting and welding can deplete air quality, causing injury or death. Always wear an air supplied respirator in confined areas, or if breathing air is not safe.

Read American National Standard Z49.1, "Safety in Welding, Cutting, and Allied Processes," available from American Welding Society, 550 N.W. LeJeune Rd., Miami, FL 33126;

OSHA Safety and health standards, available from U.S. Government Printing Office, Washington DC 20402

CM INDUSTRIES[®]

INC.

505 OAKWOOD RD. LAKE ZURICH, IL 60047 USA

PHONE: 847-550-0033 FAX: 847-550-0444

www.cmindustries.com