

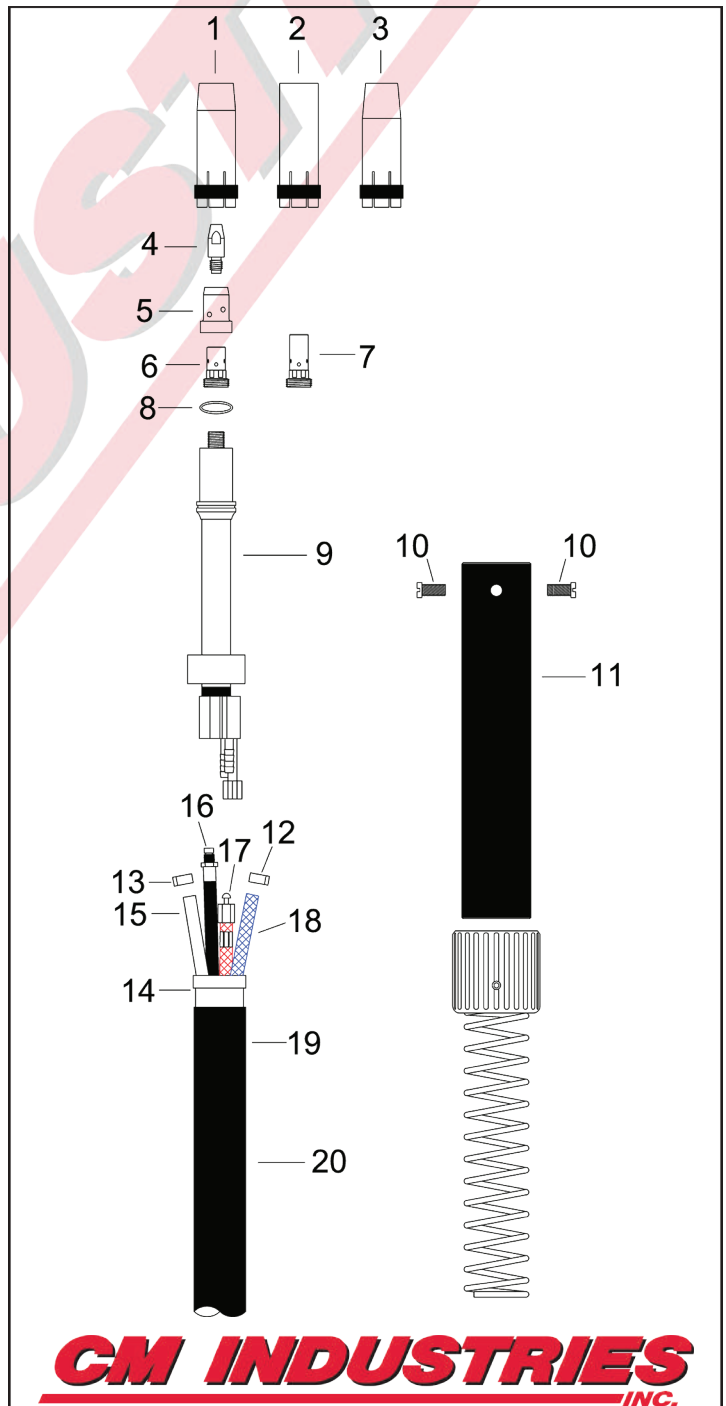
# BNZ 501AUTO

# WATER-COOLED MIG GUN

Replacement Suitable for Binzel®

RATING	GUN ORDERING PART NUMBER			POWER PIN Direct Connect
	180°	22°	45°	
<b>500 Amp CO2 @ 60% Duty Cycle</b>	852-18-0xx	852-22-0xx	852-45-0xx	Euro Lincoln® "LN" Miller®
<b>400 Amp Mixed Gas @ 60% Duty Cycle</b>	852-18-Lxx	852-22-Lxx	852-45-Lxx	
<b>Wire Capacity: 0.035" (0.9mm) - 3/32" (2.4mm)</b>	852-18-Mxx	852-22-Mxx	852-45-Mxx	
xx = Standard lengths of 4, 6, 8, and 10 ft. Custom lengths also available.				

#	Part Number	Description
1.	165-52-001 165-52-305	Nozzle, Conical, 5/8" I.D., Std. Nozzle, Conical Heavy Duty, 5/8" I.D.
2.	165-52-002	Nozzle, Cylindrical, 3/4" I.D.
3.	165-52-011 165-52-111	Nozzle, Conical Small, 9/16" I.D. Nozzle, Conical Super Small, 7/16" I.D.
4.	150-08-130 150-09-130 150-10-130 150-12-130 150-14-130 150-16-130 150-20-130 150-24-130	Contact Tip, M8, .030" 0.8mm Contact Tip, M8, .035" 0.9mm Contact Tip, M8, .040" 1.0mm Contact Tip, M8, .045" 1.2mm, Std. Contact Tip, M8, .052" 1.4mm Contact Tip, M8, 1/16" 1.6mm Contact Tip, M8, 5/64" 2.0mm Contact Tip, M8, 3/32" 2.4mm
5.	046-52-002 046-52-003	Insulator/Gas Diffuser, Std. Insulator/Gas Diffuser, High Temp.
6.	160-08-402 160-06-402	Contact Tip Holder, M8, Std. Contact Tip Holder, M6
7.	160-08-404 160-06-404	Contact Tip Holder, Long, M8, Flush Contact Tip Holder, Long, M6, Flush
8.	064-52-002	Insulating Washer
9.	060-52-180 060-52-022 060-52-045	Swan Neck, 180° Swan Neck, 22° Swan Neck, 45°
10.	285-01-001	Handle Screw
11.	170-52-016	Barrel Handle
12.	350-61-095	Hose Clamp w/ Bridge, 9.5mm
13.	350-60-087	Hose Clamp, 8.7mm
14.	260-52-001	Cable Support



**CM INDUSTRIES**  
INC.

#	Part Number	Description
<b>Items 15-20 are available in lengths 4, 6, 8 and 10 feet</b>		
15.	310-55-0__	Gas Hose
16.	235-52-0__	Wire Conduit
17.	225-52-0__	Power Cable
18.	310-52-0__	Water Hose, IN, Blue
19.	216-52-0__	Outer Cable Cover
20.	215-52-0__	Cable Assembly
21.	185-52-001	Cable Support Spring
22.	260-52-202	Adaptor Support
23.	285-01-001	Adaptor Support Screw
24.	310-53-002	Water Hose, OUT, Red, 2'
25.	401-00-001	Adaptor Nut
26.	401-02-052	Adaptor Block, Euro
27.	285-00-002	O-Ring, Adaptor Block
28.	350-52-001	Male Water Fitting
29.	350-65-002	Female Quick Disconnect
30.	350-60-095	Hose Clamp, 9.5mm
31.	401-02-053	Adaptor Block, DP
32.	401-02-054	Connector Plug, Miller
33.	C224	O-Ring, Miller
34.	401-01-002	Liner Nut, Miller
35.	401-02-056	Connector Plug, Lincoln
36.	401-01-004	Liner Retainer, Lincoln
37.	401-01-001	Liner Retaining Nut
38.	241-02-016	Liner #2, 15' .035"-.045", Std.
	241-03-016	Liner #3, 15' .052"-1/16"
	241-04-016	Liner #4, 15' 5/64"-3/32"
	241-02-027	Liner #2, 25' .035"-.045"
	241-03-027	Liner #3, 25' .052"-1/16"
	241-04-027	Liner #4, 25' 5/64"-3/32"
39.	255-10-010	Teflon Liner #10, 10' .045"
	255-10-012	Teflon Liner #10, 12' .045"
	255-10-015	Teflon Liner #10, 15' .045"
	255-05-010	Teflon Liner #5, 10' 1/16"
	255-05-012	Teflon Liner #5, 12' 1/16"
	255-05-015	Teflon Liner #5, 15' 1/16"
40.	259-05-001	Repl. Collet, Teflon Liner #5
	259-10-001	Repl. Collet, Teflon Liner #10 & #18
41.	285-00-003	Repl. O-Ring

